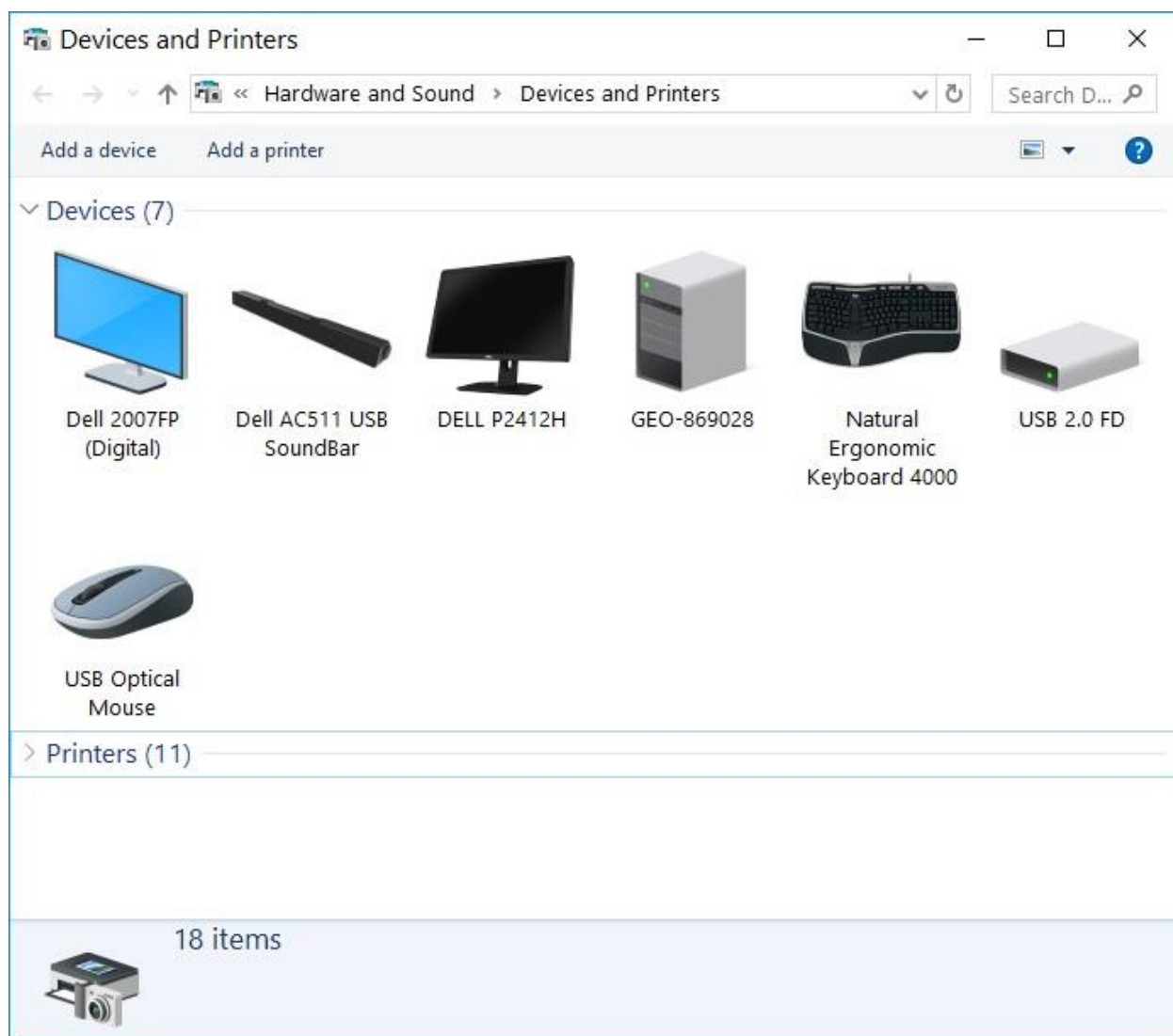
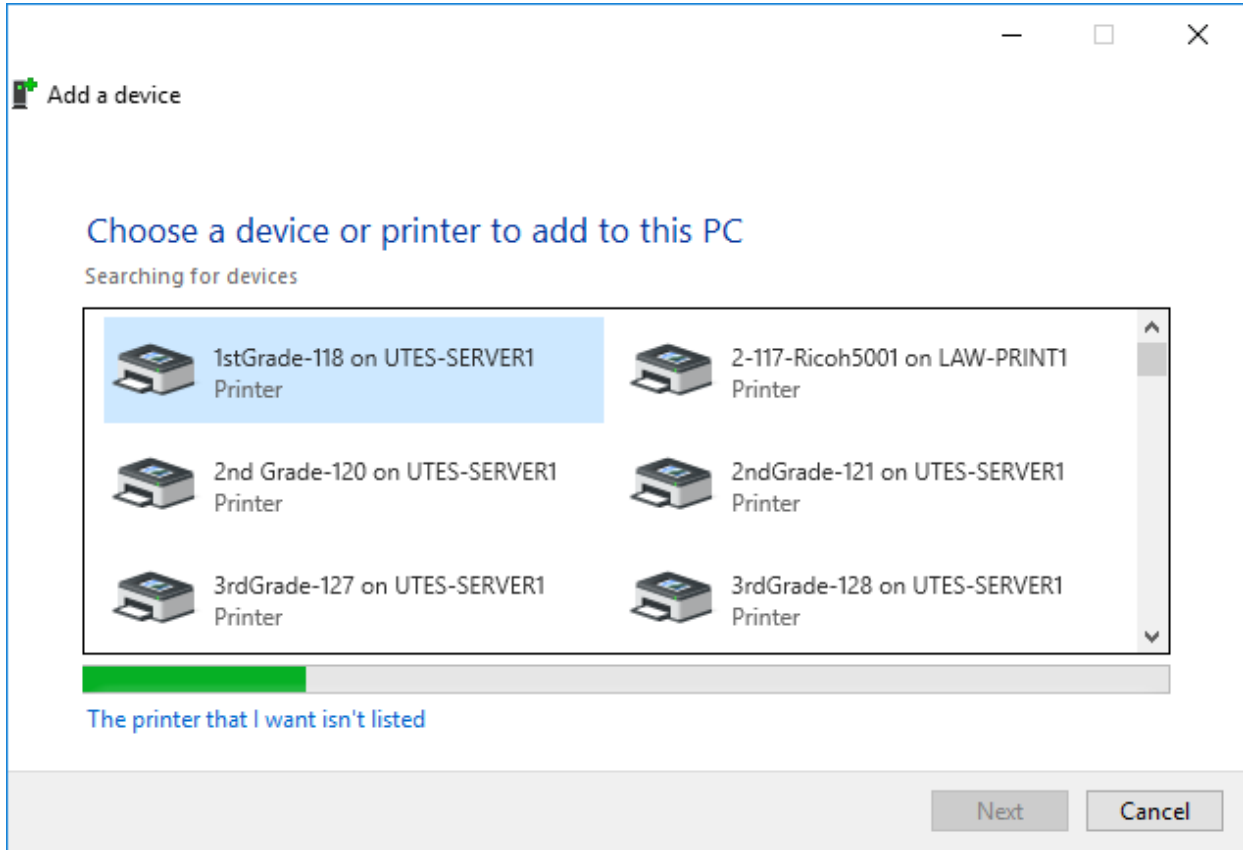


Installing Printers on Windows 10 machines. This includes Cloud printing and Standard conventional printing.

Start>Devices and Printers>Add a Printer



AT THE BOTTOM SELECT The Printer that I want isn't listed



Find a printer in the directory, based on location or feature

← Add Printer

Find a printer by other options

My printer is a little older. Help me find it.

Find a printer in the directory, based on location or feature

Select a shared printer by name

Example: \\computername\printername or
http://computername/printers/printername/.printer

Add a printer using a TCP/IP address or hostname

Add a Bluetooth, wireless or network discoverable printer

Add a local printer or network printer with manual settings

For the Cloud Printing -Under the name type Follow and connect (double click)

Find Printers

File Edit View

In: Entire Directory Browse...

Printers Features Advanced

Name: follow

Location:

Model:

Find Now Stop Clear All OK

Search results:

Name	Location	Model
Follow-You-Printing-11X17-COLOR	University Of Texas At Austin	RICOH PCL6 UniversalDr
Follow-You-Printing-85X11-COLOR	University Of Texas At Austin	RICOH PCL6 UniversalDr
Follow-You-Printing-11X17-BW	University Of Texas At Austin	RICOH PCL6 UniversalDr
Follow-You-Printing-85X11-BW	University Of Texas At Austin	RICOH PCL6 UniversalDr

< [Progress Bar] >

4 item(s) found

After you print a pop up will tell you the cost

Note:

After you print a pop up will tell you the cost

You can also visit the below site to see what you have in the que

<https://arch-equitrac.austin.utexas.edu/EQWebClient/UserDashboard>

The screenshot displays the Equitrac Express Web Client interface. At the top, the Nuance logo is on the left, and the user name 'ah74 (Huh, Adrian)' is on the right, with a 'Logoff' link. Below the header, the breadcrumb 'Home > User Dashboard' is shown. A summary bar indicates the 'Default billing code' is empty and the 'Total balance' is '-3.10 USD'. A navigation bar contains three items: 'View jobs' (with a person icon), 'Reports' (with a bar chart icon), and 'Default billing code' (with a dollar sign icon). The main content area features a table with the following data:

Document name	Owner	Submitted ▲	Expires in	Cost
Remote Desktop Windows.pdf	ah74	4/20/2017 12:10:29 PM	23:56	0.10 USD

A 'Refresh' button is located at the bottom right of the table. The footer contains the version number 'v5.6.26.890' and the copyright notice '© 2016 Nuance Communications, Inc. All rights reserved.'

For Conventional Printing (not the cloud) type the below:

geo-j (for jgb printers) and geo-e (for eps printers)

The first numbers represent the room numbers the "c" or "b" is the color or black/white printer.

Note: Community Printers (Ricoh) will only available through the cloud print system.

The screenshot shows the 'Find Printers' application window. The search criteria are set to 'In: Entire Directory' and 'Name: geo-j'. The search results are displayed in a table with columns for Name, Location, and Model. The results list 15 printers, including models like HP LaserJet 4250, Dell 5130cdn, and HP Color LaserJet 3600. The status bar at the bottom indicates '32 item(s) found'.

Name	Location	Model
geo-j2112-b-1-HP4250	JGB 2.112	HP LaserJet 4250 PCL6 Class Driver
geo-j2112-c-1-D5130	JGB 2.112	Dell 5130cdn PCL6
geo-j3206-c-1-HP3600	JSG 3.206	HP Color LaserJet 3600
geo-j3216-b-1-D5330	JGB 3.216	Dell 5330dn Mono Laser Printer PCL6
geo-j3216D-c-1-D5110	JGB 3.216D	Dell Color Laser 5110cn PS
geo-j3326-c-1-R5502	JGB 3.326	PCL6 Driver for Universal Print
geo-j3326-c-2-R5502	JGB 3.326	PCL6 Driver for Universal Print
geo-j4144-b-1-D2335	JGB 4.144	Dell 2335dn MFP PCL6
geo-j4162-b-1-D2335	JGB 4.162	Dell 2335dn MFP PCL6
geo-j4216B-b-1-D5330	JGB 4.216B	Dell 5330dn Mono Laser Printer PCL6
geo-j4216B-c-1-D5130	JGB 4.216B	Dell 5130cdn Color Laser PS
geo-j4220-c-1-D5130	JGB 4.220	Dell 5130cdn PCL6
geo-j5106-c-1-HPM476dn	JGB 5.106	HP Universal Printing PS (v6.0.0)
geo-j5202-b-1-DC1765nf	JGB 5.202	Dell C1765nf Color MFP