

How to get only the first sentence of a figure caption in a figures list

Figure List

Figure 1.2.2. Bathymetry over Green Canyon Block 955. ....1

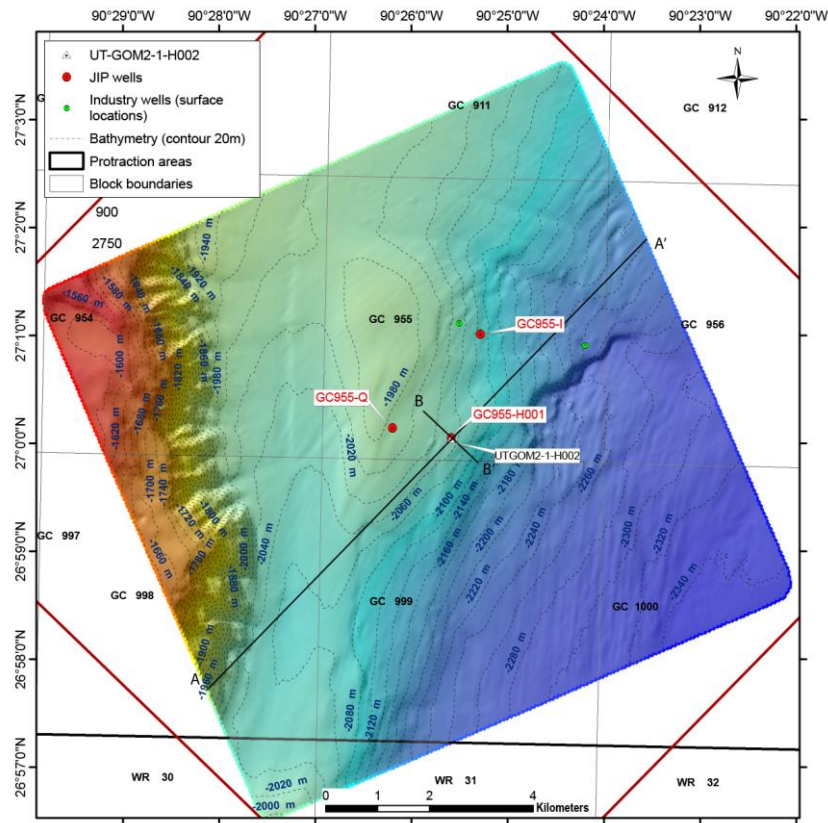


Figure 1. Error! No text of specified style in document..1. Bathymetry over Green Canyon Block 955.

The Gas Hydrates JIP Leg II LWD program drilled the H001, I001, and Q001 wells in 2009. Two industry wells (green dots) are located by their API #: the 60811402710000 well was drilled in 1999, and the 60811404770000 well (and its sidetrack) was drilled in 2006-2007. During Expedition UT-GOM2, wells GC 955 H002 GC 955 H005 were drilled adjacent to Hole GC 955 H001. Bathymetry data from the BOEM Northern Gulf Of Mexico Deepwater Bathymetry Grid.

1. Insert your figure, add your caption and generate your table of figures
2. It's easier to see what is doing if you turn on stylize. To do this, click the ¶ button on the Home->paragraph toolbar (or press Ctrl+Shift+8). By having this on, you are able to see where you have formatting.
3. In your figure caption click at the end of the first sentence
4. Hit the return key. You should now have a ¶ symbol just where you were.
5. Highlight the ¶ symbol you just created
6. In the ribbon at the top. Home -> font. Click the little expansion symbol in the bottom right hand side. This should open up a window.
7. Keep everything the same but find and check the box "hidden".
8. Click OK
9. The caption text should flow normally as if there wasn't a break after the first sentence.
10. If you update your figures list it should now only show the first sentence. Hooray.

Have fun with all your word endeavours.