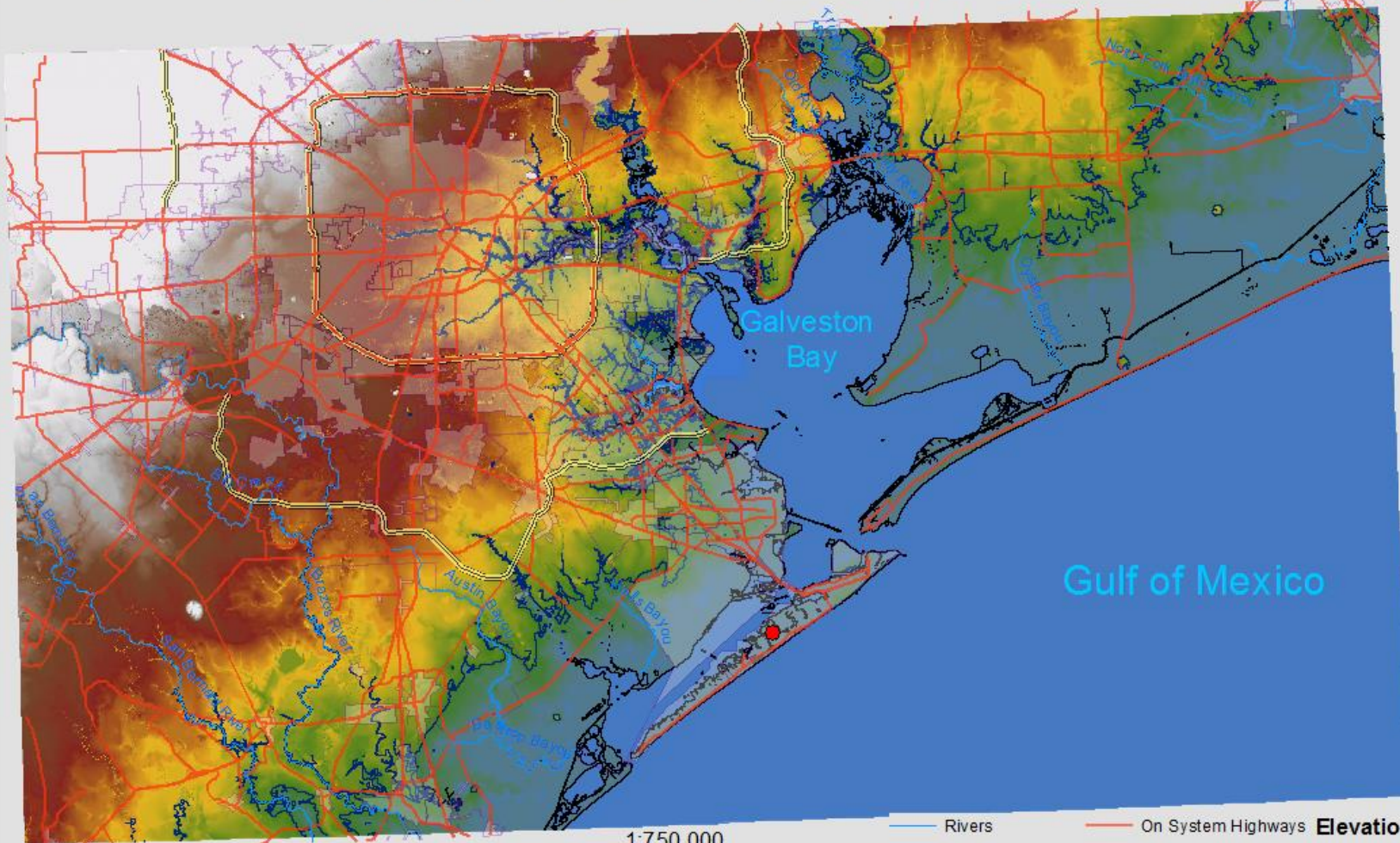


Elevation Model of Galveston and Parts of Harris County



This Map shows the difference in Elevation of the Galveston and Harris County area relative to the Gulf of Mexico.

1:750,000

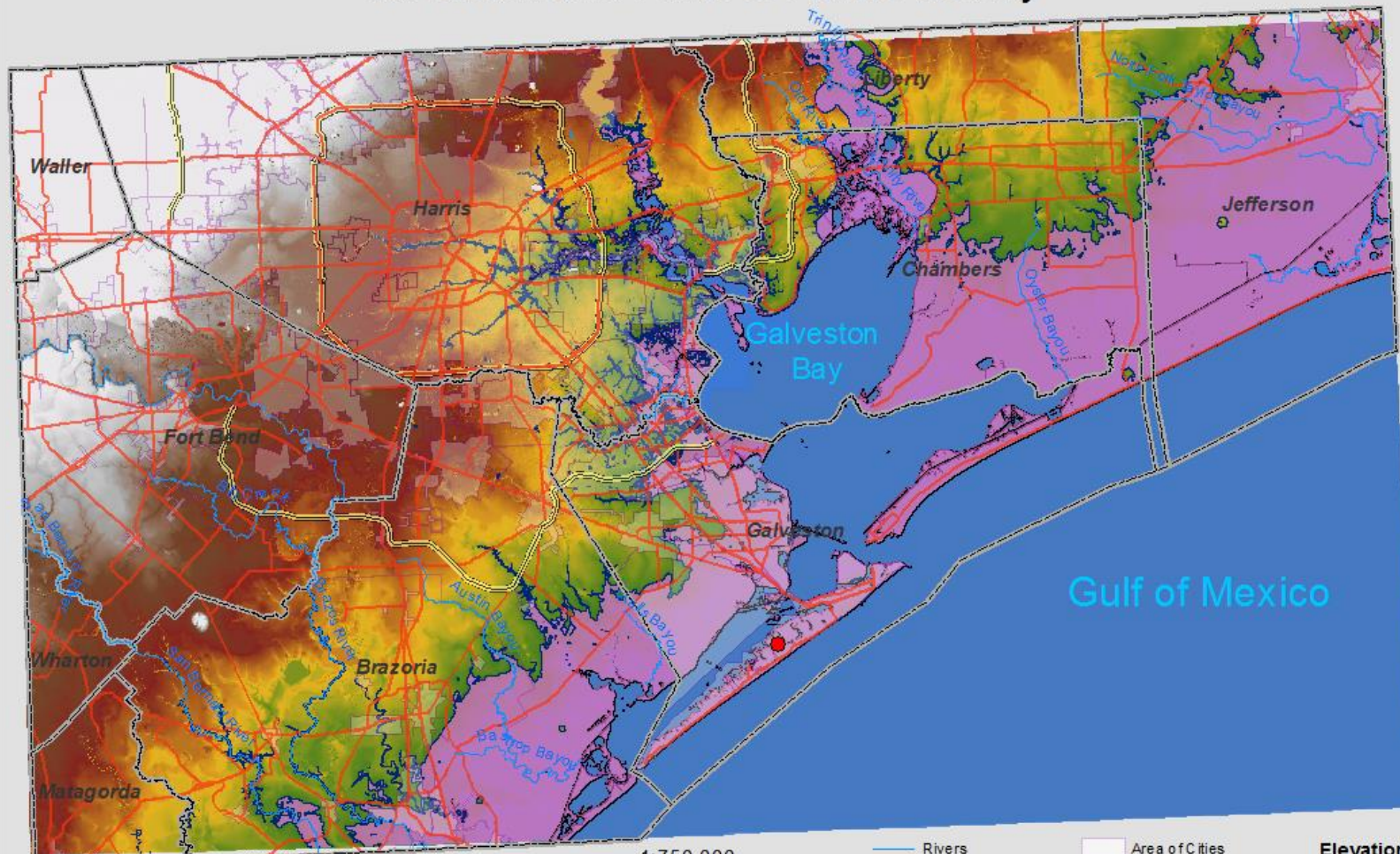
0 5 10 20 Miles

Coordinate System:
NAD_1983_StatePlane_Texas_South_Central_FIPS_42
Projection: Lambert Conformal Conic

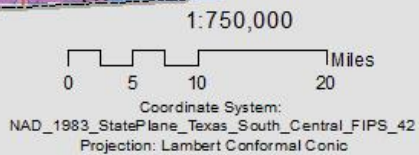
Rivers	On System Highways	Elevation Value
City of Galveston	Toll Roads	
	Area of Cities	
	0ft Contour	
	15ft Contour	

Storm Surge Flooding Area of Galveston and Parts of Harris County

North Arrow



This Map shows the area affected by a Category 4 Hurricane with a 15ft storm surge in comparison to the elevation, roads, rivers and City of Galveston.

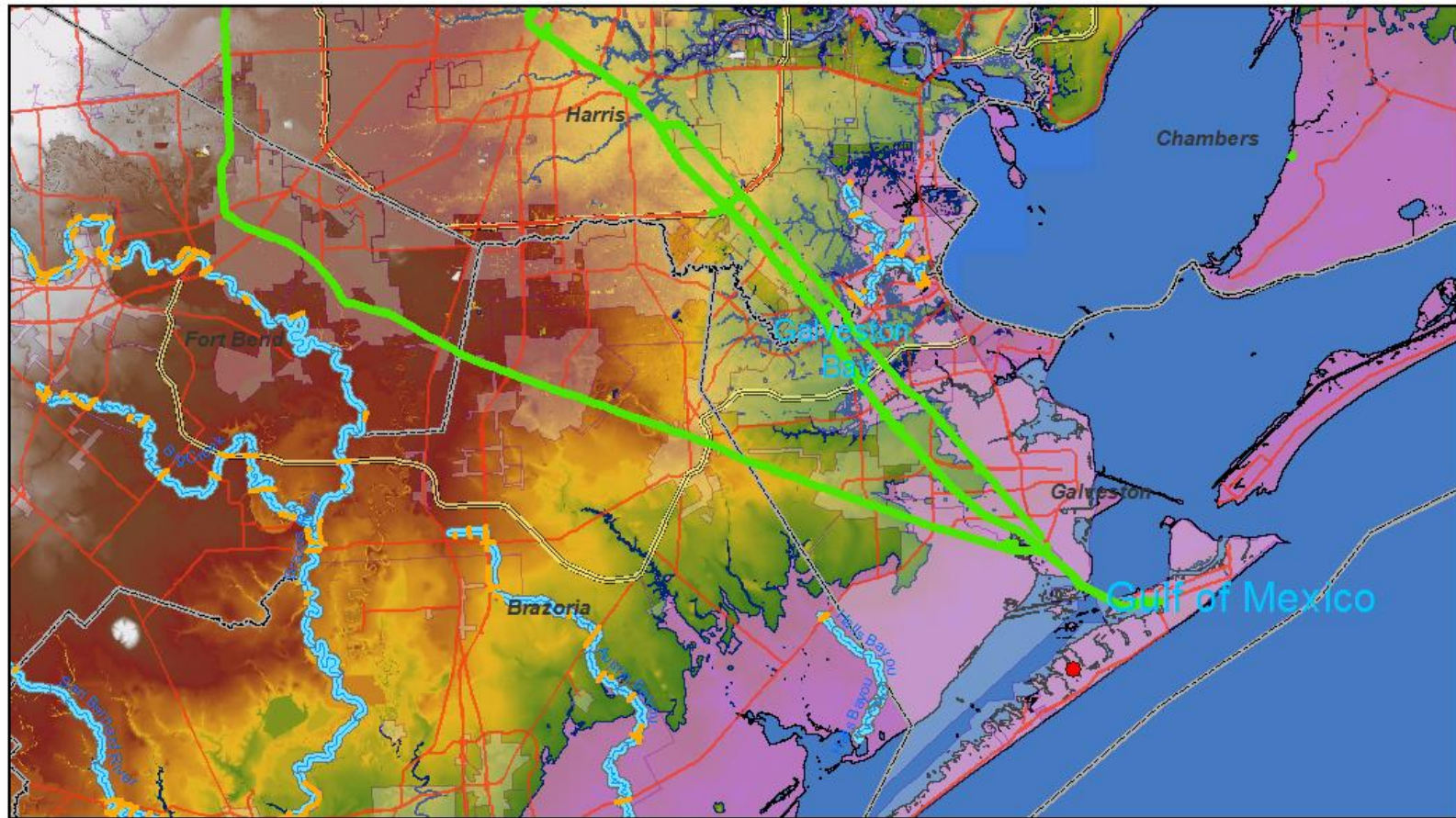


- Rivers
- Area of Cities
- City of Galveston
- County Border
- On System Highways
- Toll Roads
- 15ft Contour
- Storm Surge Hazard Area
- 0ft Contour
- Elevation Value

27

Category 4 Hurricane Evacuation Plan of Galveston and Parts of Harris County

Isaac Jimenez
ij735



1:472,065
 0 2 4 8 Miles
 Coordinate System:
 NAD_1983_StatePlane_Texas_South_Central_FIPS_42
 Projection: Lambert Conformal Conic

On this map you can see the the safest highways out of the City of Galveston marked in Green. As well as the roads that may be in danger of flooding, their areas are marked in orange. Any area inside the dark pink area is at a high risk of flooding due to the storm surged caused by Category 4 Hurricane much like the Great Hurricane of 1900 that hit the City of Galveston.

- | | | |
|--------------------------|-------------------------|----------------------------|
| Safe Road | On System Highways | Elevation Value
 |
| Hazardous Areas of Roads | Toll Roads | |
| Rivers | Area of Cities | |
| Flood Plain | 15ft Contour | |
| City of Galveston | 0ft Contour | |
| County Border | Storm Surge Hazard Area | |