



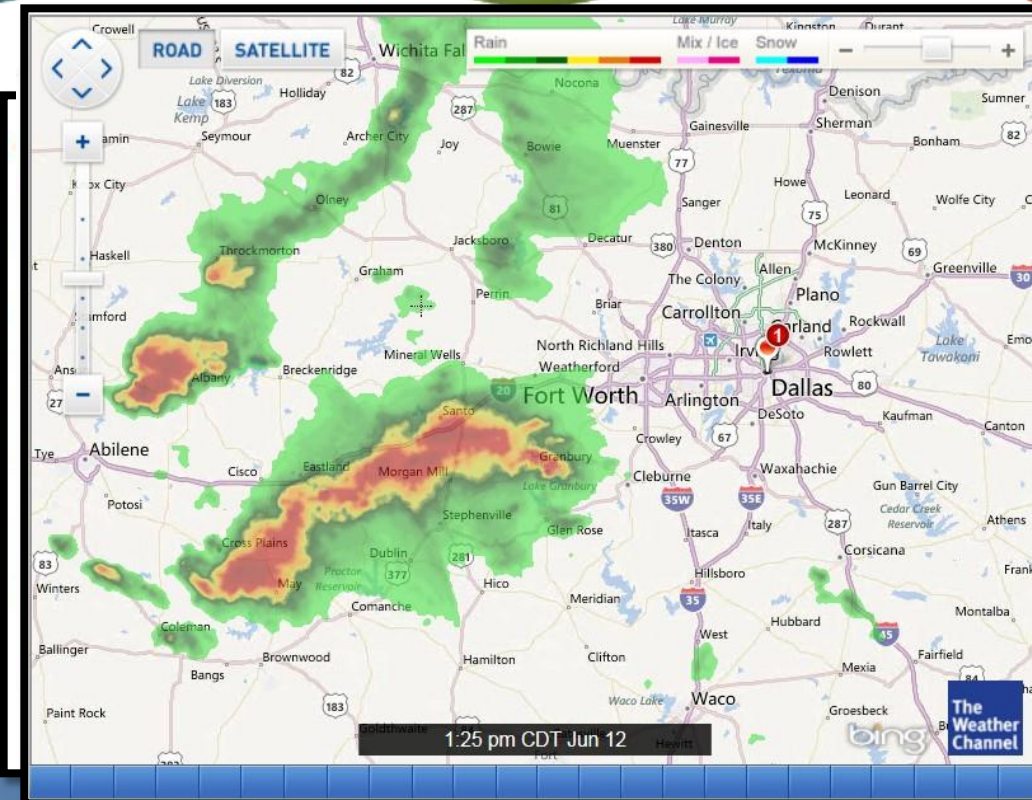
Real-Time Water Decision Support System

Barbara Minsker, Jong Lee and
Tingting Zhao



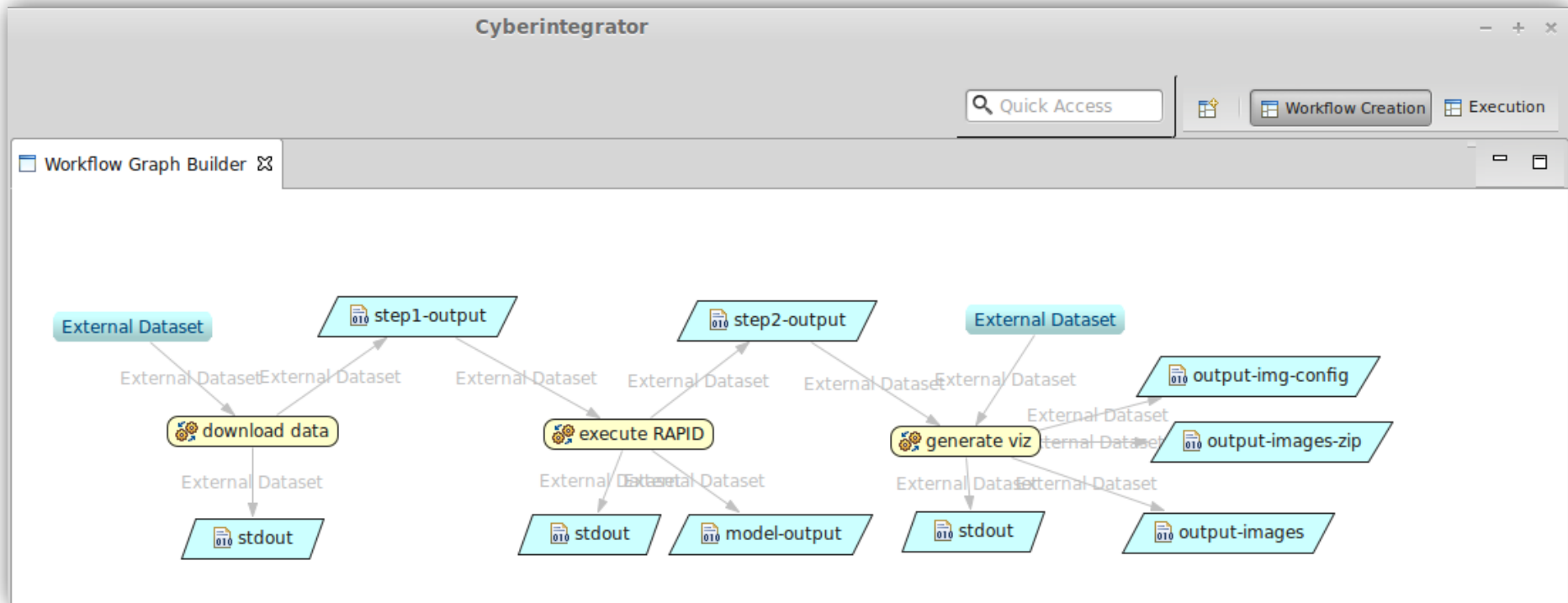
National Center for Supercomputing Applications
University of Illinois at Urbana-Champaign

Real-Time Water Decision Support System



Water
Operations

Cyberintegrator Workflow



- Download NLDAS data
- Execute RAPID model
- Generate visualization (images) of the model results

WorldWide Telescope Visualization

The screenshot displays the WorldWide Telescope (WWT) software interface. At the top, a navigation bar includes tabs for Explore, Guided Tours, Search, Community, Telescope, View, Settings, Introduction, and Sign Out. Below this is a timeline of image thumbnails labeled from 0006.0 to 032.0. The main visualization area shows a 3D globe of Earth with labels for SOUTH AMERICA, AFRICA, and the Atlantic Ocean. To the left, a panel titled 'ers >' lists image IDs such as img-7483, img-7487, and TCEQ_3D. Below the list is a table with a 'Value' header and several empty rows. Further down, there is a 'Series' section with an 'Auto Loop' checkbox and 'Add', 'Paste', and 'Reset' buttons. At the bottom, the 'Look At' panel shows 'Earth' selected under 'Imagery' with 'Virtual Earth Aerial *' as the current view. The 'Context Search Filter' is set to 'All' (1 of 1). A compass rose indicates a heading of 40,865 km.

Acknowledgments

- This work was funded under Microsoft Research grant 2010-02620.
- Yan Xu and Nels Oscar from Microsoft Research provided technical assistance with WorldWide Telescope implementation
- David Maidment, Cedric David, Ahmad Tavakoly, and Fernando Salas from University of Texas Austin collaborated in defining requirements and Rapid implementation
- Kathy Alexander, Cindy Hooper, Jordan Gouger, and others at the Texas Commission on Environmental Quality (TCEQ) collaborated in defining requirements and provided data