

Honoring a Geoscience Trail Blazer

THE UNIVERSITY OF TEXAS AT AUSTIN

JACKSON

SCHOOL OF GEOSCIENCES

Bill Carlson's Legacy



Although Dr. Bill Carlson is retired from the Forty Acres, his legacy will live on through a new endowment that supports undergraduate geoscience research: the **William D. Carlson Undergraduate Research Program Fund**.

- Ensures that undergraduate students continue to take part in research experiences that enrich their academic studies.
- Impacts the Undergraduate Honors Program, which Carlson founded and co-directed.

Carlson Undergraduate Research Endowment



Empowers students to work with top faculty members and research scientists.



Recent projects include ice deposits on Mars and the tectonic history of northern Turkey.



Research honors students in the Phillipines, site of the world's largest volcanic eruption in more than a century.

Make a Gift in Honor of Dr. Carlson

Our goal is to raise a total of \$1 million to fund annual programmatic expenses. If you are interested in supporting the William D. Carlson Undergraduate Research Program Fund, the following options are available :

- Visit our website at www.jsg.utexas.edu and follow the link to make a gift online.
- Mail a check made out to *The University of Texas at Austin* to: Jackson School of Geosciences, 2305 Speedway, C1160 Austin, TX 78712. Write Carlson Endowment in the notes section.
- Contact us to assist you with questions or information about other giving options (multi-year pledges, stock donations, etc.).

Belle German

Director of Development and Alumni Relations
bgerman@jsg.utexas.edu
(512) 471-1993

Karen Cochran

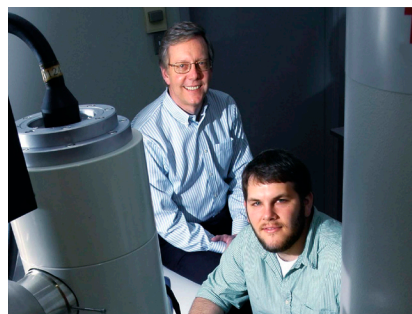
Associate Director of Development
kcochran@jsg.utexas.edu
(512) 471-6010

Jazmine Leon-Wing

Assistant Director of Development
jleon-wing@jsg.utexas.edu
(512) 232-8085



Professor Bill Carlson with students on Honors Day (2007).



Professor Bill Carlson with Wes Crawford (B.S. '04, M.S. '08) in the electron microprobe lab.



Professor Bill Carlson at Commencement (2007) with Elizabeth Hatley (B.S. '07, M.S. '10) and Chris Berg (Ph. D. '07) (left to right).